

PLEASE CHECK WWW.MOLEX.COM FOR LATEST PART INFORMATION

Part Number: [0903253012](#)
Status: **Active**
Description: 1.27mm (.050") Pitch Picoflex® PF-50 Header, Vertical, Low Profile, with PCB Pegs, 12 Circuits

Documents:

[3D Model](#) [Product Specification PS-99020-0011 \(PDF\)](#)
[Drawing \(PDF\)](#) [RoHS Certificate of Compliance \(PDF\)](#)

Agency Certification

CSA LR19980
 UL E29179

General

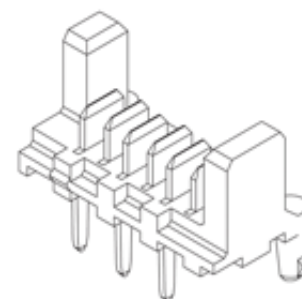
Product Family PCB Headers
 Series [90325](#)
 Application Wire-to-Board
 Comments Low Profile
 Product Name Picoflex®

Physical

Breakaway No
 Circuits (Loaded) 12
 Color - Resin Black
 Durability (mating cycles max) 100
 First Mate / Last Break No
 Flammability 94V-0
 Glow-Wire Compliant No
 Guide to Mating Part No
 Keying to Mating Part None
 Lock to Mating Part Yes
 Material - Metal Brass
 Material - Plating Mating Gold
 Material - Resin Polyester
 Number of Rows 1
 Orientation Vertical
 PCB Retention Yes
 PCB Thickness Recommended (in) 0.062 In
 PCB Thickness Recommended (mm) 1.60 mm
 Packaging Type Bag
 Pitch - Mating Interface (in) 0.050 In
 Pitch - Mating Interface (mm) 1.27 mm
 Plating min: Mating (µin) 30.4
 Plating min: Mating (µm) 0.76
 Plating min: Termination (µin) 120
 Plating min: Termination (µm) 3
 Polarized to Mating Part Yes
 Polarized to PCB Yes
 Shrouded No
 Stackable No
 Surface Mount Compatible (SMC) No
 Temperature Range - Operating -40°C to +105°C
 Termination Interface: Style Through Hole

Electrical

Current - Maximum per Contact 1.2A



Series

image - Reference only

EU RoHS

ELV and RoHS Compliant
REACH SVHC Contains SVHC: No
Halogen-Free Status
Not Reviewed

China RoHS



Need more information on product environmental compliance?

Email productcompliance@molex.com
 For a multiple part number RoHS Certificate of Compliance, [click here](#)

Please visit the [Contact Us](#) section for any non-product compliance questions.

Search Parts in this Series

[90325Series](#)

Mates With

[90327 IDT Connector](#)

Voltage - Maximum 250V

Solder Process Data

Duration at Max. Process Temperature (seconds) 5
Lead-free Process Capability Wave Capable (TH only)
Max. Cycles at Max. Process Temperature 1
Process Temperature max. C 230

Material Info

Reference - Drawing Numbers

Product Specification PS-99020-0011
Sales Drawing SDA-90325

This document was generated on 04/21/2010

PLEASE CHECK WWW.MOLEX.COM FOR LATEST PART INFORMATION

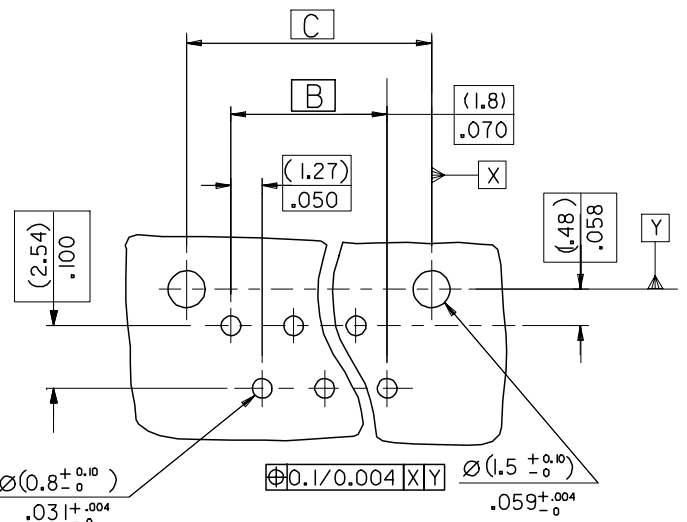
10 9 8 7 6 5 4 3 2 1



| | | | | | | |
|--------------|-------------|---------------|---------------|---------------|---------------|-------------------|
| 90325 - **26 | 26 | (36.80)/1.449 | (31.75)/1.250 | (35.35)/1.392 | (37.26)/1.467 | 14 |
| ↑ - **24 | 24 | (34.26)/1.349 | (29.21)/1.150 | (32.81)/1.292 | (34.72)/1.367 | 15 |
| - **22 | 22 | (31.72)/1.249 | (26.67)/1.050 | (30.27)/1.192 | (32.18)/1.267 | 16 |
| - **20 | 20 | (29.18)/1.149 | (24.13)/.950 | (27.73)/1.092 | (29.64)/1.167 | 18 |
| - **18 | 18 | (26.64)/1.049 | (21.59)/.850 | (25.19)/.992 | (27.10)/1.067 | 19 |
| - **16 | 16 | (24.10)/.949 | (19.05)/.750 | (22.65)/.892 | (24.56)/.967 | 22 |
| - **14 | 14 | (21.56)/.849 | (16.51)/.650 | (20.11)/.792 | (22.02)/.867 | 24 |
| - **12 | 12 | (19.02)/.749 | (13.97)/.550 | (17.57)/.692 | (19.48)/.767 | 27 |
| - **10 | 10 | (16.48)/.649 | (11.43)/.450 | (15.03)/.592 | (16.94)/.667 | 32 |
| - **08 | 8 | (13.94)/.549 | (8.89)/.350 | (12.49)/.492 | (14.40)/.567 | 36 |
| ↓ - **06 | 6 | (11.40)/.449 | (6.35)/.250 | (9.95)/.392 | (11.86)/.467 | 44 |
| 90325 - **04 | 4 | (8.86)/.349 | (3.81)/.150 | (7.41)/.292 | (9.32)/.367 | 57 |
| PART NO. | NO. OF CKTS | DIM. A | DIM. B | DIM. C | DIM. D | NO. ASSYS IN TUBE |

CIRCUIT No. 1 90325- * * * *
 CIRCUIT SIZE 04 CKT TO 26 CKT
 0 = HOUSING : COLOUR BLACK
 9 = HOUSING : CUSTOMER SPECIFIC (COLOUR BLACK)
 0= 3-5um TIN ASSY
 3= 0.76um GOLD ASSY
 5= NON STANDARD VOIDED OPTION SEE SHEET 2
 6= ROUND PEG WITH KINKS OPTION SEE SHEET 3
 7= 0.76um GOLD, TUBED
 9= 3-5um TIN ASSY TUBED

PCB LAYOUT VIEWED FROM SOLDER SIDE. BOARD (1.60±0.14) THK .063+0.006 THK.



NOTES:
 1. HOUSING MATL. POLYESTER PBT 15% GLASS FILLED TO UL94 V-0.
 2. TER. MATL. BRASS (0.28)/.011 THK
 PLATING. TIN: (1.27um)/50u" MIN NICKEL UNDER (3-5um)/120-200u" TIN
 PLATING. GOLD: (1.27um)/50u" MIN. NICKEL UNDER (3-5um)/120-200u" TIN SELECTIVE AND (0.76um)/30u" SELECTIVE GOLD
 3. CONFORMS TO PRODUCT SPECIFICATION PS-99020-0011

| | | |
|---------------------------|--------------------------------|-----------------|
| ADD CKT.1 INDICATOR | DESCRIPTION | QUALITY SYMBOLS |
| EC NO: E2007-0083 | DRWN:DMASZKI/EMI/CZ 2006/09/11 | ▽=0 |
| CHKD:J.DENNEHY 2006/09/11 | APPR:J.DENNEHY 2006/09/13 | ▽=0 |
| AN | REV | |

| | | | | | | | |
|---------------------------------------|--------|--|--------------------|---|---------------------|------------------------|--|
| GENERAL TOLERANCES (UNLESS SPECIFIED) | | DIMENSION STYLE MM/IN | | SCALE 5:1 | DESIGN UNITS METRIC | THIRD ANGLE PROJECTION | |
| 4 PLACES ± --- | ± --- | DRAWN BY DMCN | DATE 2001/05/29 | TITLE HEADER ASSEMBLY | | | |
| 3 PLACES ± --- | ± .008 | CHECKED BY ROCONNOR | DATE 2001/05/29 | APPROVED BY MWILHITE | | | |
| 2 PLACES ± 0.20 | ± .008 | DATE 2001/05/29 | MOLEX INCORPORATED | | | | |
| 1 PLACE ± 0.20 | ± --- | MATERIAL NO. | | DOCUMENT NO. SDA-90325 | SHEET NO. 1 OF 3 | | |
| ANGULAR ±1/2° | | DRAFT WHERE APPLICABLE MUST REMAIN WITHIN DIMENSIONS | | THIS DRAWING CONTAINS INFORMATION THAT IS PROPRIETARY TO MOLEX INCORPORATED AND SHOULD NOT BE USED WITHOUT WRITTEN PERMISSION | | | |

9 8 7 6 5 4 3 2 1